



The First Choice of Automotive Professionals

Updating Mitchell/ShopKey 5.9 to latest version

Thursday, February 14, 2013 – Mitchell 1 (rev 10)

Installing the latest version

- Exit your management software.
- **NOTE:** If you are using a multi-user version of shop management, you must run this update at each workstation.
- Open your Internet Browser; enter <http://m1files.com> in the address line. Hit the 'Enter' key to proceed to that website.
- Click on the red 'Download' button and save the file to your desktop or other convenient location. (Note: Multi-user systems must run this update on each computer.)
- When the file has been downloaded, you will find a new file named "**mgr595203.exe**".
- Double click on that file to begin the update process. The first installation screen seen is shown in figure 1. Click on 'OK' to continue.

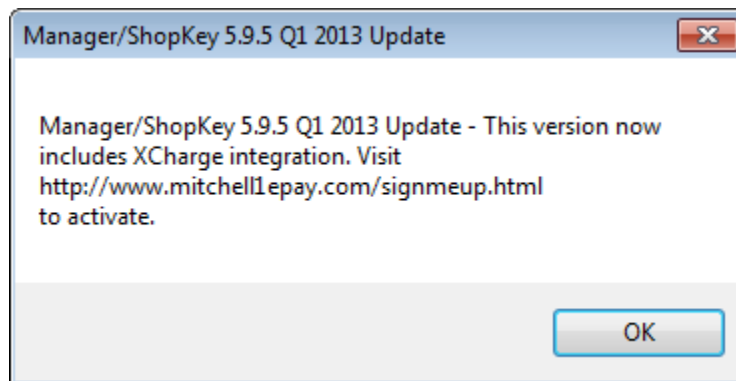


Figure 1

- The Install Wizard will display as show in figure 2. Click on 'Next' to continue.

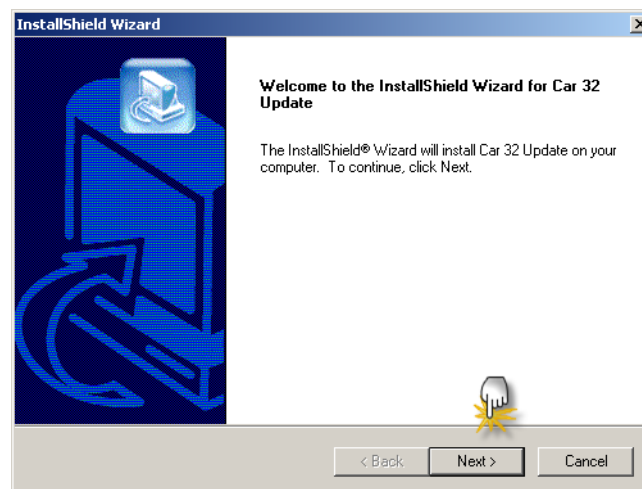


Figure 2

- The Setup Status will show the progress of the installation.

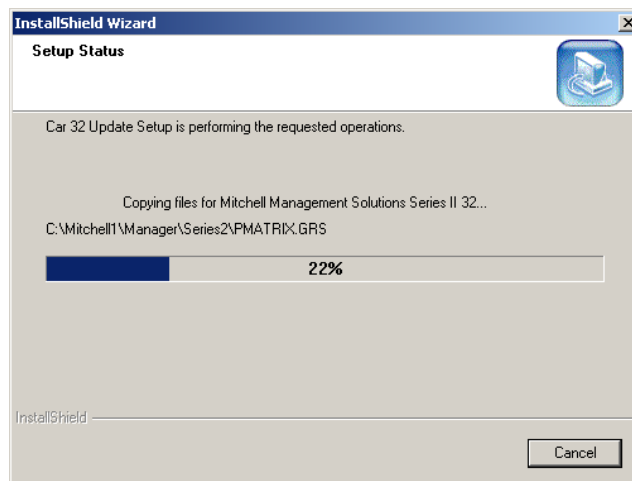


Figure 3

- When the installation is complete, the screen shown in figure 4 will appear. Click on the 'Finish' button. You will briefly see another window open then close in the background, this is normal operation.

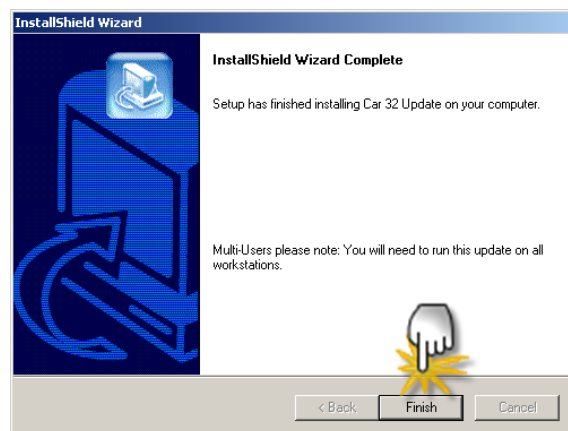


Figure 4

- **NOTE:** If you are using a multi-user version of shop management, you must run this update at each workstation.